



SET-UP AND USER GUIDE

DIETTM **MANAGER**



Digi - Star[®] LLC

SOFTWARE LICENSE AGREEMENT

IMPORTANT: The Digi-Star[®] software being installed by you or by our technical staff will be licensed to you, the licensee, on the condition that you agree with DIGI-STAR[®] LLC ("Digi-Star") to the terms and conditions set forth in this legal agreement. PLEASE READ THIS AGREEMENT CAREFULLY, YOU WILL BE BOUND BY THE TERMS OF THIS AGREEMENT IF YOU INSTALL, OR IF YOU HAVE DIGI-STAR[®]'S TECHNICAL STAFF OR AUTHORIZED REPRESENTATIVE INSTALL SOFTWARE FOR YOU. If you do not agree to the terms contained in this agreement, please return the disk package to your dealer for a full refund, or do not have a Digi-Star[®] technician or authorized representative install this software. Once you have allowed the software to be installed, you are bound by this agreement.

If you agree to these terms and conditions, Digi-Star[®] grants to you a nonexclusive license to use the accompanying software (the "Software") and documentation. The Software and the documentation are referred to in this Agreement as the "Licensed Material".

1. Ownership

The Licensed Materials are the sole and exclusive property of Digi-Star[®] and are protected by U.S. Copy Right Law and international Treaty Provisions. By paying the license fee and by installing, or by allowing a Digi-Star[®] technical or authorized representative to install the software, you do not become the owner of the Licensed Material according to the terms of this agreement.

2. License

The license granted to you by Digi-Star[®] in this agreement authorizes you to use the Software on any single computer, or any replacement for that computer. The Software may not be used on a Network Server. A separate disk, licensed under an additional software agreement, is required for any other computer on which you wish to load the Software. YOU MAY NOT USE, COPY, OR MODIFY THE LICENSED MATERIAL IN WHOLE OR PART, EXCEPT AS EXPRESSLY PROVIDED IN THIS AGREEMENT.

3. Term

This Agreement is effective from the date on which you open the sealed disk package and installed the Software or have the Software installed by Digi-Star[®]. This agreement may be terminated by you at any time by destroying the Licensed Material, together with all copies, modifications and merged portions in any form. It will also terminate automatically if you fail to comply with any term of condition of this agreement.

4. Restrictions and Transfer

You may not sublicense, assign, share, rent, lease, or otherwise transfer your right to use the Licensed Material, nor any other rights granted to you under this agreement, except stated in this paragraph. You may permanently transfer the software to any other party if the other party is purchasing your business operation, the other party agrees to the terms and conditions of this agreement, you transfer all copies of the Licensed Material to that party, or destroy those which are not transferred and that new party pays a license transfer fee of 25% of the original license fee. By such transfer, you terminate the license granted to you in this agreement.

5. Restrictions against copying or modifying the Licensed Material

The Licensed Materials are copyrighted by Digi-Star[®]. Except as expressly permitted in this agreement, you may not copy or otherwise reproduce the Licensed Materials. In no event does the limited copying or reproduction permitted under this Agreement include the right to decompile, disassemble, or electrically transfer the Software in any form, in whole or in part, or of any modification of the Software, or any updated work containing the Software, or any part thereof. You also agree not to remove any existing copyright notice of the License Materials.

6. Protection and Security

You agree to use your best efforts and take all reasonable steps to safeguard the License Materials to ensure that no unauthorized person has access to them and that non authorized copying, publication, disclosure, or distribution of any of the Licensed Material is made. You acknowledge that the Licensed Materials contain valuable, confidential, and trade secrets and that unauthorized use and copying are harmful to Digi-Star[®] and its software suppliers, and that you have the confidential obligation on such valuable information and trade secrets.

7. Limited Warranty

Digi-Star[®] warrants that the media on which the Software is recorded will be free from defects in workmanship and materials for a period of 90 (ninety) days from the payment of the license fee, and if Digi-Star[®] determines the media to be defective and provided the media was not subject to misuse, abuse, or use in defective equipment, Digi-Star[®] will replace the media. ALL IMPLIED WARRANTIES ON THE MEDIA, INCLUDING IMPUTED WARRANTIES OF MERCHANTABILITY AND FITNESS FOR A PARTICULAR PURPOSE, ARE LIMITED TO THE DURATION OF OF THE EXPRESS WARRANTY SET FORTH ABOVE.

IN NO EVENT WILL DIGI-STAR[®] OR ANY OTHER PARTY WHO HAS BEEN INVOLVED IN THE CREATION, PRODUCTION, OR DELIVERY AND INSTALLATION OF THE LICENSE MATERIALS BE LIABLE FOR SPECIAL, DIRECT, INDIRECT, OR CONSEQUENTIAL DAMAGES, IN NO EVENT SHALL DIGI-STAR[®]'S OR SUCH OTHER PARTY'S LIABILITY FOR ANY DAMAGE, OR LOSS TO YOU OR ANY OTHER PARTY EXCEED DIGI-STAR REPLACING THE MEDIA ON WHICH THE LICENSED MATERIALS HAS SUPPLIED.

8. General

If any provision or of portion of a provision of this Agreement is determined to be invalid under any applicable law, it shall be deemed omitted and the remaining provision and partial provisions of this Agreement shall continue in full force and effect.

This Agreement constitutes the entire agreement between the parties with respect to the subject matter hereof, and all prior agreements, statements and undertakings are hereby expressly canceled.

Table of Contents

Introduction.....	1
Minimum System Requirements.....	1
System Setup.....	2
Connect the DataKey™ Docking Station	2
Install Diet Manager™ Software.....	2
Find Comm	3
Diet Manager™ Setup.....	4
Enter/Update Commodities.....	4
Enter/Update Recipes.....	4
Enter/Update Corrals	5
Enter/Update Wagons	6
Entering/Updating Operators	7
Sending Feed Data	7
Loads Mode	7
Send Loads to the DataKey™	8
List Mode	8
Send Loads to the DataKey™	9
Datakey Docking Station Activity Light Formats	9
RF Datalink.....	9
Auto Send (RF Datalink)	10
Feeding with the EZ3500 Indicator	10
Receive Data from the DataKey™	10
Receive Data Options	11
Receive Data from RF Datalink.....	11
View Data on DataKey™	12
Test DataKey™	12
Authorize DataKey™	12
Reports	13
Report Types/Definitions.....	13
Help Menu	13

Introduction

Welcome to the *Diet Manager™ Set-up and User Guide*. Diet Manager™ is a software program designed to easily utilize the EZ3500 Indicator and DataKey™ to track and record recipe loading and feeding. Diet Manager™ allows you to set up specific recipes and pen deliveries for your herd. The program tracks and records each step in the process including tracking each individual operator. The program outputs the completed loading and feeding data into over 10 easy to read reports with selectable date ranges. This provides you with the valuable data required to optimize your feeding system on a cost/production basis.

The program is Windows® based to allow you to get up and running quickly and start understanding and controlling your feeding costs.

Diet Manager™ includes:

1. Software on Compact Disk
2. Data Key™ Docking Station with Cable
3. Manual and Documents

Minimum System Requirements

Make certain that your PC includes the following hardware and software. These are the minimum system requirements to run Diet Manager™.

- A Pentium™ 100 or better PC
- Microsoft Windows XP Service Pack 2 or greater
- Adobe Acrobat Reader™
- 100 Meg Free disk space
- 32 Meg Ram
- CD Drive
- A mouse
- A serial port
- Printer
- 28.8 modem
- Internet Service Provider

A USB to Serial Port adapter can be used if your PC does not have a free serial port. The serial port must be assigned to a port number 1 to 8. A higher comm. port setting will not work with the Diet Manager™ program.

Note: Certain programs can interfere with the operation of the serial port / Diet Manager™. These programs include Palm Desktop and some auto ID systems and milk monitoring programs. If these programs are installed and running on the PC you intend to use for the Diet Manager™ system, they must be shut off when reading / writing to the DataKey™. Failure to shut these programs off during this sequence may result in errors and lost data.

System Setup

Connect the DataKey™ Docking Station

The DataKey™ Docking Station is the interface device for the DataKey™. This device must be connected to the computer running the Diet Manager™ software.

Note: The DataKey™ is not needed to operate the Diet Manager Software unless you are sending feeding data to the DataKey™ or running the software for the first time.

To connect the device:

1. Connect the 9-pin connector to the serial 9-pin connector on the computer that will be running the Diet Manager™ software.
2. Plug the power supply into an 115v/230v outlet. The power light on the DataKey™ Docking Station should be ON.
3. Insert the DataKey™ into the slot on the front of the DataKey™ Docking Station.

Install Diet Manager™ Software

Read the Digi-Star® License Agreement on the sheet accompanying the software and this manual. When you break the seal on the CD, and install the software, you agree to the terms of the license agreement.

The Diet Manager™ software is shipped to you on a CD. To install the software, please close all other open programs. Insert the CD into the drive. On Windows XP™ operating systems, you must log on as administrator. If Auto Run is enabled on your computer, follow the installation instructions.

If the installation screen does not appear, go to **Start** and select **Run**. From the Run menu, browse the CD and select **setup.exe**. The install screen will now appear. Follow the installation instructions.

Install, connect and power On the DataKey™ Docking Station and Insert the DataKey™ before attempting to start the Diet Manager™ software. Failure to do so will result in an error during the initial phase of the software setup.

Select the program Language

After installation of the software, the first time that the Diet Manager™ program is started, the Language Selection box will appear.

Note: The Language Selection can be changed at any time after initial setup.

To select a language from the list, click on the desired language and click Ok to save your selection. The language selection can be changed from within the Diet Manager™ program by selecting **System, Language** from the main menu.



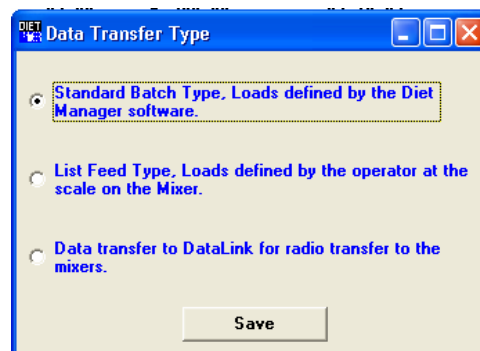
Data Transfer Type for the EZ3500 and EZ4300

Data sent to the EZ3500 and EZ4300 can be sent in three formats:

Standard Batch Type: Each load is built by the PC software. It assigns pens to a recipe and builds an exact load for the pens. Loads are built and delivered by pressing [Recipe] only.

List Feed Type: The PC software sends the recipe data and the pen data in two different fields. The operator selects the recipe to build and which pens will be delivered.

Press [Recipe] to select a recipe list or press [Pens] to select the pens list.

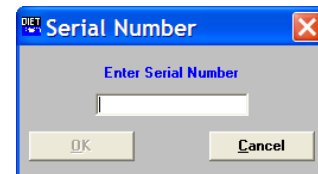


Note: List Feed Type is also used for recipes only and pens only.

RF Datalink: Feeding data is sent to RF Datalink.

Enter the Program Serial Number

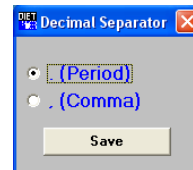
After selecting the program language, enter the 6 digit serial number of the program “from the CD”. Click **Ok** when done.



Select the Decimal Separator

Select the **Decimal Separator** and click **Save**.

This selection is for types of currency separators.



Select the Currency Symbol

Select the Currency Symbol and click **Save**.



Find Comm

After installation of the software, the first time you run the Diet Manager™ program, the Find Comm program will automatically run. This program is designed to find the working comm. port and data transfer device used with your system.

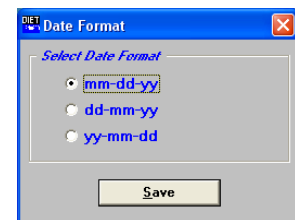
After clicking on Start, the program will begin searching for a working comm. Port and DataKey™. This search can take up to several minutes. After finding the comm. port and device, the program will update the Diet Manager™ program and start the program.

A working DataKey™ must be inserted in the DataKey™ Docking Station.

Select the Date Format

Select the **Date Format** you wish to use and click **Save**.

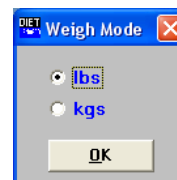
Note: The selected Date Format should match the Date Format of the EZ3500 Indicator.



Select Weigh Mode

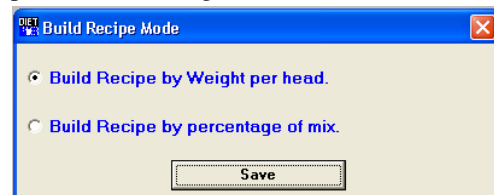
Select your **Weigh Mode** and click **Ok**.

Note: The values entered will not convert if mode is changed later.



Recipe Build Mode

Select how to build the recipes. Either by weight per head or percent of each ingredient



Diet Manager™ Setup

Enter/Update Commodities

Add New Ingredients

To access the Ingredient screen, Select the **Ingredients** tab, or from the Main Menu, select **Files, Ingredients**. Click **Add New** to add an ingredient. This will display the Add Ingredient Screen.

Enter the Ingredient data:

Code – 6 character name of the ingredient as displayed on the EZ3500.

Description – Full ingredient description.

Cost – Cost of the ingredient, per lb, ton, kg, etc.

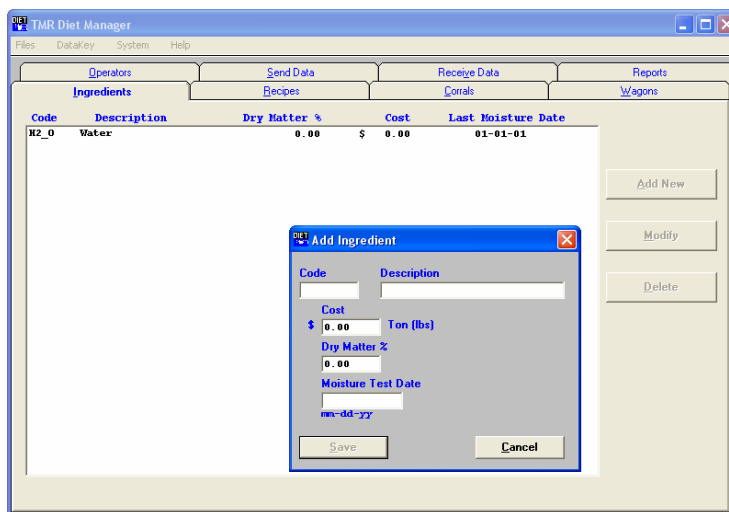
Dry Matter % – Dry matter % of the ingredient.

Moisture Test Date –Date of the last dry matter test.

When complete, Click Save to save your entries or Cancel to exit without saving.

To modify an ingredient, select the ingredient and then click Modify.

To delete an ingredient, select the ingredient to delete and then click Delete. Make sure the ingredient is not being used in a recipe before you delete the ingredient.



Note: Water is a default ingredient and cannot be deleted.

Enter/Update Recipes

Add New Recipes

Select the **Recipes** tab, or from the Main Menu, select **Files, Recipes**. Click **New** to add a Recipe.

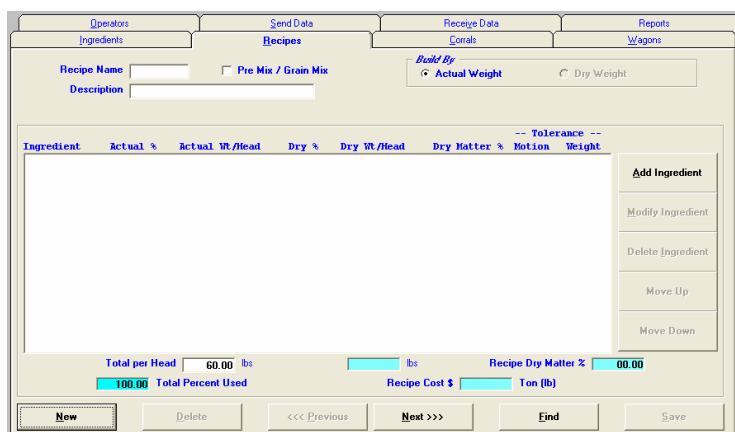
Enter the Recipe data:

Recipe Name – 6 character name of the Recipe as displayed on the EZ3500.

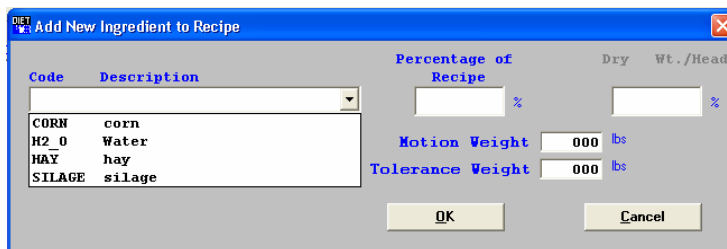
Premix / Grain Mix – Select if the Recipe is a Premix/Grain Mix.

Build By – Select to determine how the recipe is built, by Actual weight, by Dry Weight or by Percent per ingredient.

Description – Full description of the Recipe.



To Add an Ingredient to the Recipe, click on the **Add Ingredient** button. This will display the **Add New Ingredient to Recipe** screen.



To add an Ingredient, Click on the **Down Arrow** in the Code / Description box. This will display a drop-down menu selection of all the ingredients entered in the Ingredient screen. Select the ingredient from the list. Enter the amount to load under either the Actual Wt./Head or Dry Wt./Head depending on your selection made under the Build By selection.

Motion Weight – This setting prevents the ingredient or corral to advance if the weight is unstable or moving. The motion weight is the amount of weight the display changes by for the “Motion” Arrow to begin flashing. This allows the "Motion Weight Value" to be adjusted for each feedline. The indicator uses the motion weight value to determine when the weight on the scale is changing rapidly. Motion detection will activate when the weight displayed has moved more than "Motion Weight" (ex. 20lbs) in less than "2 seconds".

This is different than the standard motion detection which activates when the weight displayed has moved more than "2 display counts" in less than "2 seconds". The standard motion detection is selected whenever the indicator is first turned ON or the "Motion Weight" value is set to "0". The "Motion Weight Value" has a range from 000(OFF) to 999. The weight value is either lb or kg depending on setting for Display Units in Long Form Setup.

To access this option: Enter short cut number 103 and press the [Select] key. Press [Select] key to toggle on/off. Press the [On] key to save.

Tolerance Weight – This option is useful if you need to set different tolerance weights for individual ingredients. The tolerance weight determines when the delay timer will begin. For example: if your tolerance weight is 100 lbs/Kgs on corn silage, when you reach 100 remaining to load the “delay time” will begin to count down.

This tolerance weight will over ride the tolerance set at the indicator for only ingredients that have a tolerance weight entered from the software.

The auto-advance resets the "delay time" counter every time the weight moves out of the tolerance window. If enabled, "motion detection" also resets the "delay time" counter

Modify Ingredient - To modify an ingredient select the ingredient and click on Modify Ingredient.

Delete Ingredient – To delete an ingredient select the ingredient and click on Delete Ingredient.

Change Ingredient Order – To change the ingredient order, select the ingredient and click on Move Up or Move Down.

When complete, click **Ok** to save the ingredient. Repeat as required to enter the ingredients for the Recipe.

Moving to Other Recipes – To move between different recipes, click the Next and Previous buttons.

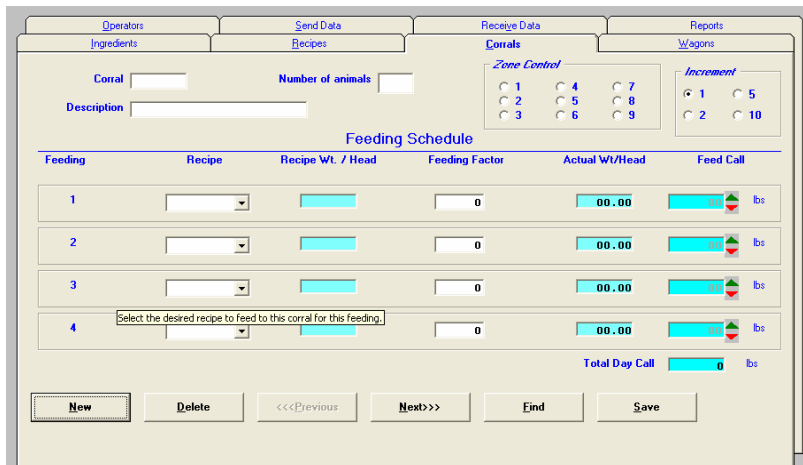
Enter/Update Corrals

Add New Corrals



Select the **Corrals** tab, or from the Main Menu, select **Files, Corrals**. Click **New** to add a Corral.

Enter the Corral Data:



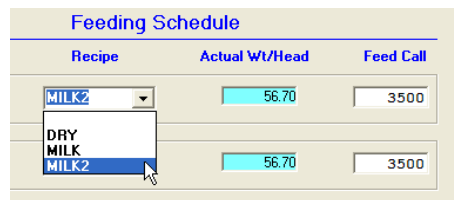
Corral – 6 character name of the Corral as displayed on the EZ3500.

Number of Animals – Number of animals in the corral.

Description – Full description of the Recipe.

Each Corral can be fed 4 times per day.

Click on the **Down Arrow** under the Recipe heading. This will display a drop-down menu of the Recipes entered.



Click on the Recipe to feed. This will automatically input the Feed Call by multiplying the Actual Wt./Head by the number of animals entered. Repeat as required for each feeding. When complete, Click **Save** to save your entries.

Feeding Factor Percentage - is the amount to be fed per feeding. As an example, if you want to feed a corral 5000 lbs/kgs of a Ration. You can split that between two feedings at a feeding factor of 50% each feeding and the pen would receive 2500 lbs/kgs each feeding. The feeding factor can be adjusted to feed more in the morning and less in the afternoon, or anything in between.

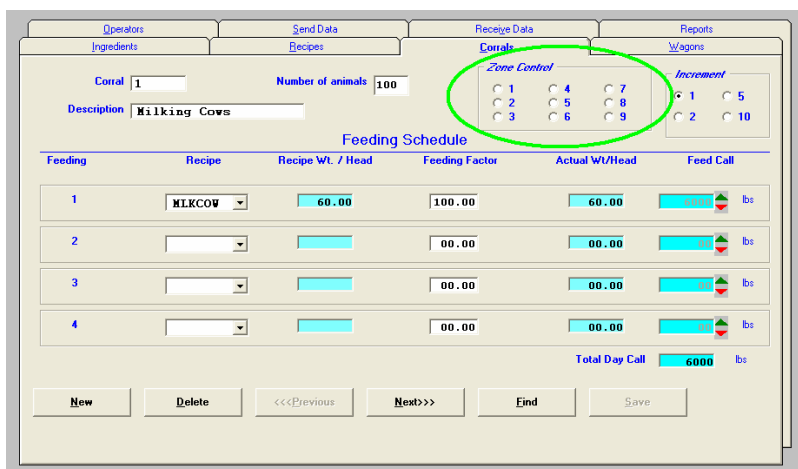
Moving to Other Corrals – To move between different corrals, click the Next and Previous buttons.

Increment -To increase or decrease the Feed Call, you can also use the Up and Down arrows to the right of each Feed Call weight. Use the Increment number to change the amount the weight changes by.

Add Zones to a Corral

Select the **System** drop down, select **Zone Control** and then select **On**

The zone control allows you to assign specific corrals to zones and to assign feed wagons to zones. This feature lets you split your farm into zones that are then processed by feed wagons assigned to that zone. If you select this feature, you must select the zones to assign in both the Corral and Wagon screens.



Enter/Update Wagons

Add New Wagons



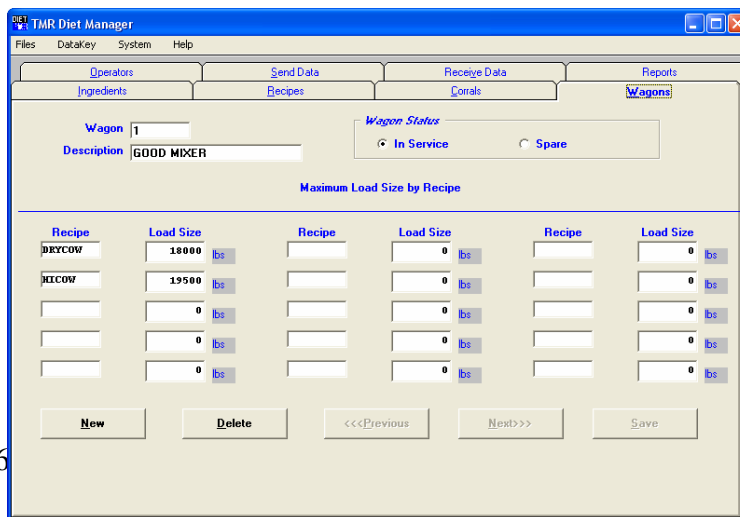
Select the **Wagons** tab, or from the Main Menu, select **Files, Wagons**. Click **New** to add a Wagon.

Enter the Wagon data.

Wagon – 6 character name of the Wagon.

Description – Full description of the Wagon.

Wagon Status – “In Service” or “Spare”.



Load Size –Maximum amount that can be loaded for each recipe. This number needs to be accurate to prevent overloading the feed mixer.

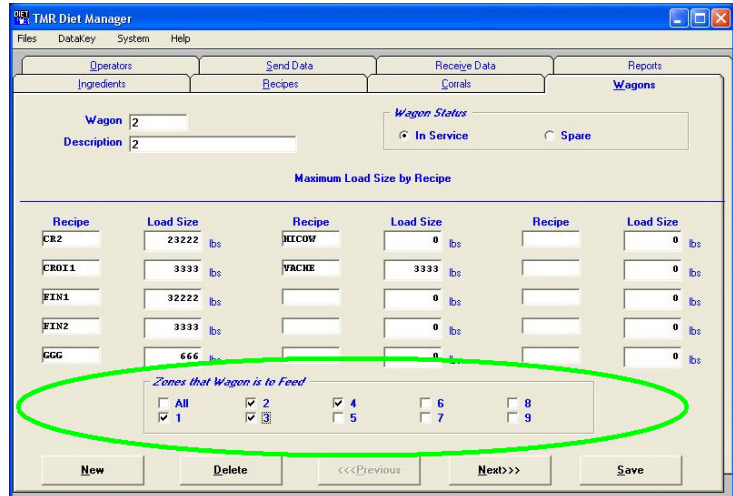
Moving to Other Wagons – To move between different wagons, click the Next and Previous buttons.

When complete, click **Save** to save your settings.

Select Wagons for Specific Corrals (Zone Option)

Select the Zones for the wagon that is assigned to unload to certain corrals

Keep in mind of what zone number that a corral has assigned to it.



Entering/Updating Operators

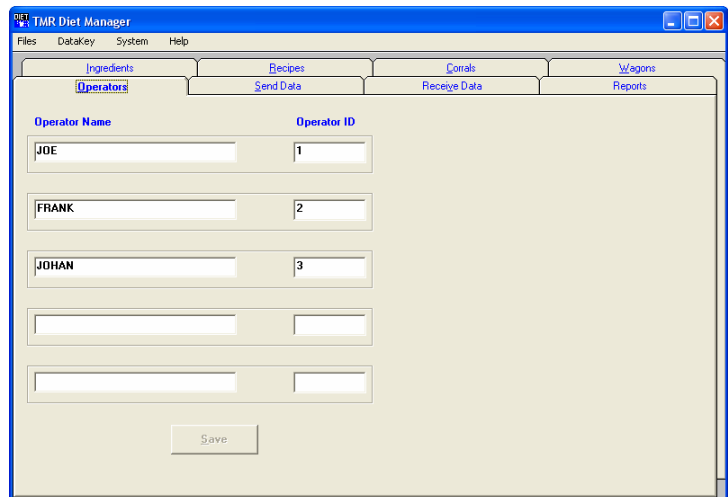


Select the **Operators** tab, or from the Main Menu, select **Files, Operators**.

Enter the Operator name in the entry field. Enter an Operator ID in the entry field.

Up to 5 operators can be entered. When complete, click **Save**.

Note: The Operator ID should match the ID entered at the EZ3500. To make this as easy as possible, assign a single numerical to each Operator.



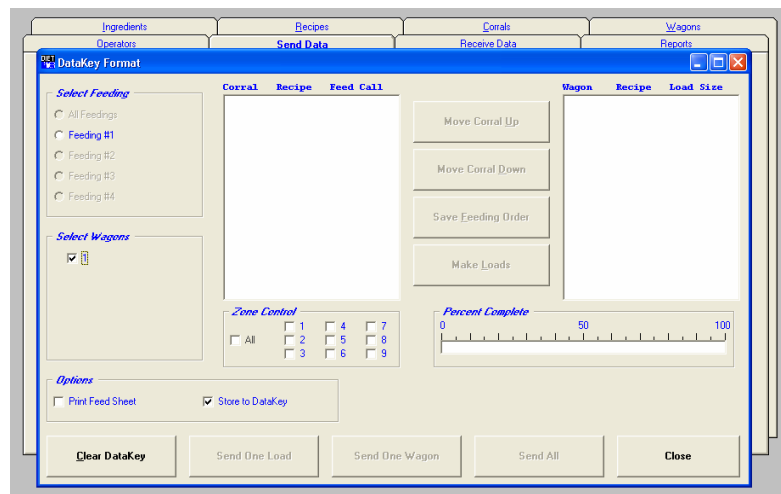
Sending Feed Data

Loads Mode



Select a Feeding

Select the Feeding to send. One feeding at a time may be sent or select **All Feedings** to send all feedings at once.



Select a Wagon

Click on the check-box for the specific Wagon.

Print Feed Sheets

Select **Print Feed Sheet**. Un-check the Store to **DataKey™** check-box to print feed sheets without sending data to the DataKey™.

Set the Feeding Order

Highlight a corral and click on the **Move Corral Up** or **Move Corral Down** buttons. The feeding order determines how the order of the corrals is displayed on the EZ3500.

When the feeding order has been set, click on **Save Feeding Order**. A temporary change can be made by changing the order and not clicking on **Save Feeding Order**. This sends the corrals in the order specified, but does not save the new order.

The right-hand window is provided to review the feeding order and corral grouping prior to sending the data to the DataKey™. Changes to the feeding order can be made at any time prior to sending data to the DataKey™. Make your required changes and click on the **Make Loads** button to update the right-hand window.

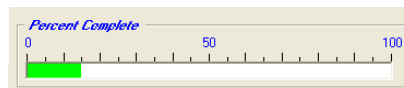
*Note: No loads are sent until a **Send** button is clicked.*

Send Loads to the DataKey™

When you are satisfied with the feeding order and grouping, click on **Send All** to send all the feeding data to the DataKey™.

As the data is sent to the DataKey™, a green progress bar will track the percent complete.

When all the data has been sent to the DataKey™, a message box will appear showing the status of the data sent and the right-hand window will be blank.



Send a Single Load to the DataKey™

To send a single load at a time, highlight the load you want to send to the DataKey™ by clicking on it in the right-hand window.

Click on the **Send One Load** button. This will send the selected load to the DataKey™. No other loads will be sent.

List Mode



Select a Feeding

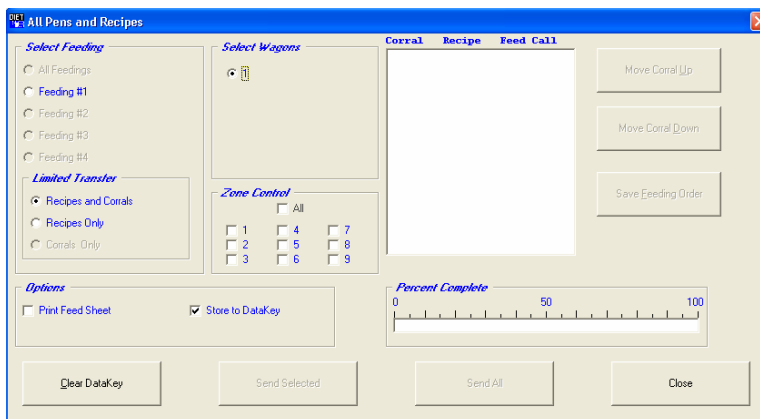
Select the Feeding to send.

Print Feed Sheets

Select **Print Feed Sheet**. Un-check the Store to **DataKey™** check-box to print feed sheets without sending data to the DataKey™.

Set the Feeding Order

Highlight a corral and click on the **Move Corral Up** or **Move Corral Down** buttons.



The feeding order determines how the order of the corrals is displayed on the EZ3500.

When the feeding order has been set, click on **Save Feeding Order**. A temporary change can be made by changing the order and not clicking on **Save Feeding Order**. This sends the corrals in the order specified, but does not save the new order.

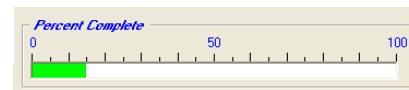
Send Loads to the DataKey™

When you are satisfied with the feeding order, click on **Send All** to send all the feeding data to the DataKey™ or send selected by clicking on the pen you want to send and then click on **Send Selected**.

You may also send Recipes only if you are loading from a stationary load box and unloading into a delivery box. Then click on **Send All**.

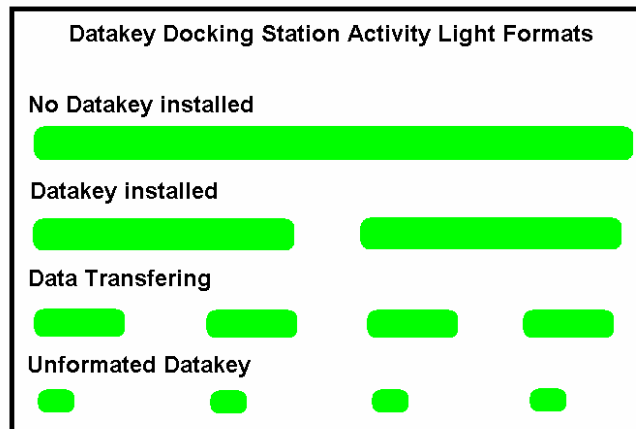
As the data is sent to the DataKey™, a green progress bar will track the percent complete.

When all the data has been sent to the DataKey™, a message box will appear showing the status of the data sent and the right-hand window will be blank.



Datakey Docking Station Activity Light Formats

This shows how the activity light would behave: (Green) On, (Blank) Off

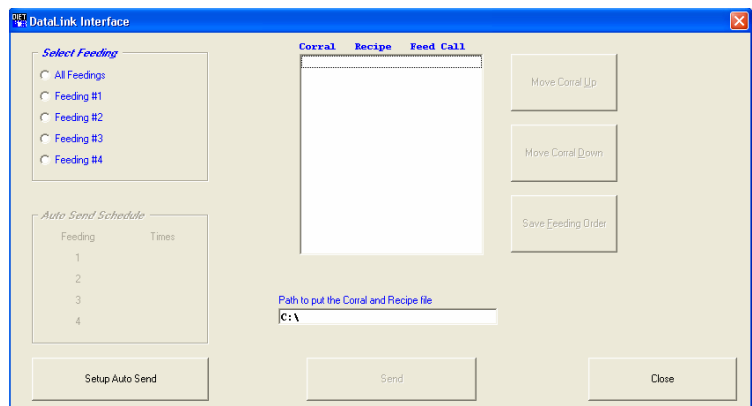


RF Datalink

When using RF Datalink with Diet Manager.

Select the feeding number and set the feeding order.

Set the correct file path for RF Datalink to receive the file. Normaly set to C:\



Then click on **Send**

Auto Send (RF Datalink)

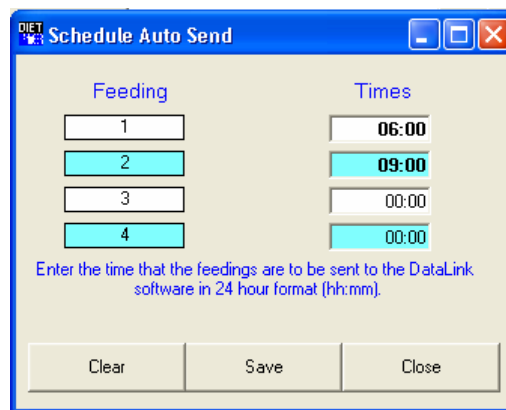
In the send data screen, you may set a time for Diet Manager to automatically send data to RF Datalink.

Start by clicking on **Setup Auto Send**.

The following screen will appear:

Enter the times to automatically send the feeding number to RF Datalink. Enter the time in 24 hour format. Then click Save and the times will be displayed in the Send Feeding Data screen.

Note: Do not set times the same for feedings. Set 1 or more minutes apart.



Feeding with the EZ3500 Indicator

With the feeding information stored on the key, insert the DataKey™ into the EZ3500 and upload the information by selecting the [ON] button. If data is already stored in the EZ3500, the stored data will be written to the DataKey first then follow the previous instructions. Use the [RECIPE] button to locate the load you wish to start, and press the [LOAD] button to start loading. Refer to the EZ3500 operators manual for complete information. With feeding completed, insert the DataKey™ into the indicator and turn to write the completed information to the DataKey™.

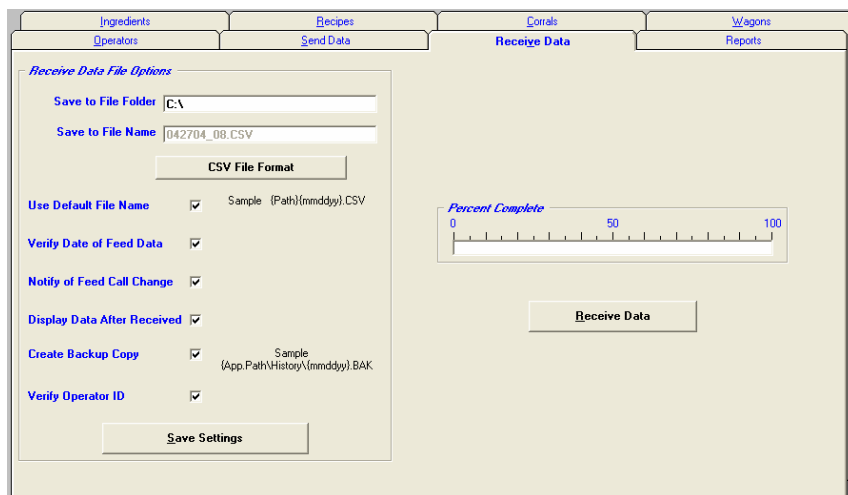
Receive Data from the DataKey™



To access the Receive Data screen, Select the **Receive Data** tab, or from the Main Menu, select **DataKey™**, **Receive Data**.

Save to File Folder

This option sets the path that the received data will be saved to. The default location is C:\. To create a different location, first create the location in Windows®. Next, enter the new file location.



Receive Data Options

Use Default File Name – When this option is checked, the file name will be saved using that days date. When it is not check, you may enter a name for the file.

Verify Date of Feed Data – When the option is checked, the date of the feed data coming back from the EZ3500/EZ4300 will be compared to the computers date. If the date does not match, you are given the option to change the date of the feed data.

Notify of Feed Call Change – When this option is checked, a warning window will appear showing you that the operator made a change to the planed weight to be feed to that corral.

Display Data After Received – When this option is checked, a text file will appear of the raw feed data from the Datakey.

Create Backup Copy – When this option is checked, Diet Manager will create a backup file in the History folder in the Diet Manager folder: C:\Diet_Manager\History*

Verify Operator ID – When this option is checked, if an operator ID number is not entered correctly at the EZ3500\EZ4300 an warning window will appear notifying you of the error.

When done, click **Save Settings** to save your entries.

Receive Data from RF Datalink

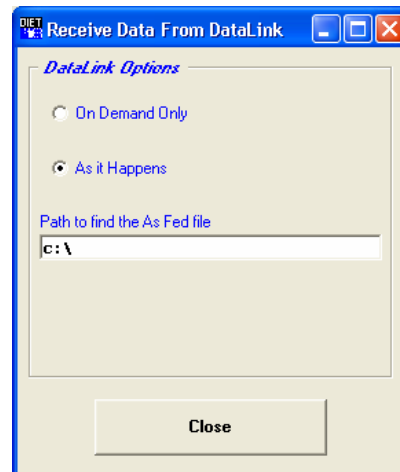
To access the Receive Data screen, select the Receive Data screen.

Enter the file path to receive the data from RF Datalink. Normally set to C:\

Select how the data needs to be received.

On Demand - By clicking on receive data.

As it Happens - Whenever new data is available, Diet manager will upload into the databases.



Save to File Name

This option sets the file name that the received data will be saved as. The default file name is the path entered in **Save to File Folder**, date(mmddyy format).CSV.

To save the file to a different name, un-check the **Use Default File Name** and enter a file name in the **Save to File Name** box.

When done, click **Save Settings** to save your entries.

View Data on DataKey™



From the Main Menu, select **DataKey™**, **View Data on DataKey™**. Insert the DataKey™ into the DataKey™ Docking Station and click **Read**.

As the data is read, a green progress bar will track the percent complete. When complete, the available data to view will be selectable under the **Available Data**.

Available Data		Recipe Requests		
	Recipe No.	Call Wt.	Batch	
<input checked="" type="radio"/> Recipe Requests	MILK	8299	1022	
<input type="radio"/> Corral Requests	ALFAL	1604		
<input type="radio"/> Recipes Complete	HAY	1913		
<input type="radio"/> Corrals Complete	CORN	1166		
<input type="radio"/> DataKey Name	COTTON	903		
	MIN	253		
	MOLAS	2460		
	DRY	2000	1023	
	ALFAL	222		
	HAY	697		
	CORN	309		
	MOLAS	772		
	MILK	8299	2024	

Test DataKey™

To access the Test DataKey™ screen, from the Main Menu, select **DataKey™**, **Test DataKey™**.

A message will appear asking you to verify that you want to Test the DataKey™ and that testing will destroy any data on the DataKey™.

Select **Yes** to test the DataKey™.

Note: The DataKey™ test can take up to 1 minute to complete.

Select **Run Test** to begin the DataKey™ test.

Authorize DataKey™

To access the Authorize DataKey™ screen, from the Main Menu, select **DataKey™**, **Authorize DataKey™**.

In the unlikely event that a DataKey™ Header file becomes corrupt, the Authorize DataKey™ function will re-format the DataKey™ Header. Selecting this function will require an Authorization Code provided by Digi-Star®. Enter the code as provided by Digi-Star® and click **Authorize**. The Diet Manager™ program will re-format the DataKey™ header file.

Reports

In the report list, select the desired report. The date range will highlight. Using the **Select** button, select the start and end date on the calendar. Please note the month and year the calendar is displaying.

Report Types/Definitions

Diet Manager offers over 10 reports to show you entered information such as ingredients and recipes, along with the received date of actual ingredient usage and corral feeding. Reports include the following:

Ingredient List	Ingredients names, ingredient cost and dry matter percentage.
Recipe List	Recipes listing all of the ingredients used, actual weight per head, dry weight per head, cost per ton and their percentage of load.
Corral Feeding List	Corrals and their feeding schedule.
Wagon List	Wagons and their load sizes for each recipe.
Operator List	Operators and their log-in codes.
Ingredient Usage	Usage of each ingredient over the selected date range.
Ingredient Deviation by Recipe	Deviation of ingredient loading by grouped recipe.
Corral Delivery Summary	Deliveries made to the selected corrals for the selected dates.
Corral Delivery Deviation	Deviation of recipe weights delivered to the selected corrals for the selected date range.
DMI per Head by Corral	<u>D</u> ry <u>M</u> atter <u>I</u> ntake per head by corral for the selected date range.
Recipe Delivery by Corral	Recipes delivered to the corrals for the selected date range.

Help Menu

For further help, select the Help dropdown menu. Instruction manuals and how to use the EZ3500 scale indicator.

