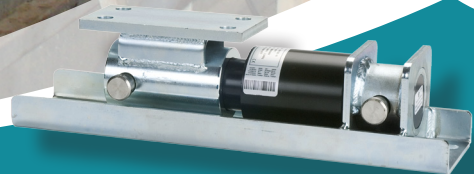


PRECISION LIVESTOCK WEIGHING SYSTEMS

Provides Stable Readings
Despite Restless Animal
Movement



Digi-Star 

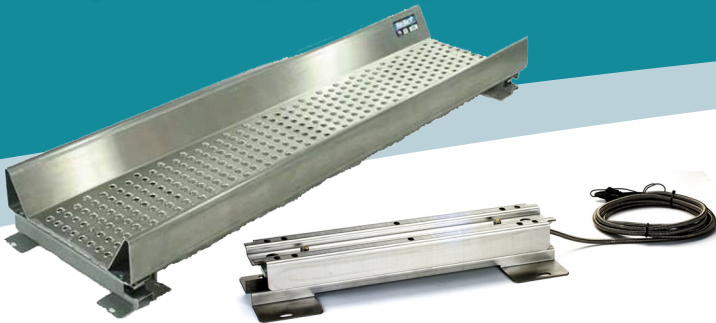


Providing Measuring Solutions to Optimize Agricultural Performance

Top Performing Scale Systems

Wrangler Elite Alleyway Scale System

Heavy Duty Squeeze Chute Scale System



Why Digi-Star?

We offer top quality, practical products and features for weighing livestock.

Industry Exclusives:

- ✓ Stainless-steel Cable Guard feature protects from animal biting, rodent chewing, pinching, or cutting of cable. This also keeps the cable diameter smaller for ease of routing cables through or around framework
- ✓ Patented load cell design on SW3300 and SW6600 weigh beams offer accurate weighing on uneven surfaces. No need to pour cement slab. Ideal for pastures.
- ✓ Rugged, Heavy Duty 7,000 lb., servicable weigh beam
- ✓ Low temperature operating indicators, $-20^{\circ}\text{F} > 140^{\circ}\text{F}$ operating temperature

Additional Features Include:

- AA battery powered SW300, entry level indicator promotes up to 50+ hours of non-stop weighing in remote areas
- Digi-Star Heavy Duty Load Cells are designed to endure the harshest of elements.
- Indicator to PC data exchange with available serial ports
- 3-year warranty
- 24-hour Help Desk. We are here for you, evenings and weekends.

Call us: 800-225-7695



Digi-Star
STOCKWEIGH LINK SOFTWARE REPORT

EID Number	Sex	DOB	Month	Year	Color	ADWGT	Quick Data
A 88000 O 08	GR	4/8/2009	16:02	YYY	D		
A 88000 O 08	GR	4/8/2009	16:09	F11	D		PINKEYE
A 88000 O 08	S	4/8/2009	16:13	JKL	D		BAD LFT RR FOX
A 88000 O 08	S	4/8/2009	16:16	JKL	D		NICE
A 88000 O 08	S	4/8/2009	16:18	JKL	D		MO TAIL
A 88000 O 08	S	4/8/2009	16:21	JKL	D		JOCK BRAND
A 88000 O 08	GR	4/8/2009	16:22	JKL	D		TORN LFT EA
A 88000 O 08	GR	4/8/2009	16:23	JKL	D		
A 88000 O 08		5/8/2009	7:38	JKL		3.51	
A 88000 O 08		5/8/2009	7:39	JKL		3.67	
A 88000 O 08		5/8/2009	7:41	JKL		3.48	
A 88000 O 08		7/8/2009	7:42	JKL		3.09	



Precision Livestock Weighing Systems

Digi-Star® scales have been exclusively designed for the rugged animal weighing environment. Our experienced design team has carefully selected the most durable components and blended them into a superior design using the latest technology. Advanced signal filtering coupled with Digi-Star's unique Lock-On feature provides stable readings despite restless animal movement. The 14-segment backlit display provides excellent visibility in all environments.

- EZ calibration for any Digi-Star load cell configuration
- Compatible with all load cells
- Lock-On weighing
- Bright back-Lit display
- Front panel programmability for easy set-up and calibration
- "HELP" messages in 7 languages
- 3 mounting bracket styles
- 3-Year warranty
- 24/7 phone support
- Low battery warning
- Pounds or kilograms
- AC/DC converter



SW 600

The SW600 model is the ideal indicator to export basic weight data to chute side software.

- One DB9 serial connector
- Multiple pre-programmed Print formats
- Compatible with all brands of load cells
- Bright, 1", 6-digit backlit display
- AC/DC converter power supply and 12V battery clips

Entry Level DIGI-STAR® Digital Indicators



SW 300

Our most popular, easy-to-use indicator. Ideal for small producers, FFA and 4-H groups. The SW300 features a compact, durable design with the convenience of an internal battery.

- AA battery powered (2), minimum of 50 hours of service
- General, Slow, Fast, and Lock-on weigh methods
- Auto shut off to conserve battery life
- 1", 6-digit, bright backlit display
- AC/DC converter power supply



EZ400 LFT (Legal For Trade)

This robust NTEP approved indicator meets your simple weigh needs.

- One DB9 Serial Connector
- Multiple pre-programmed Print formats
- Gross/Net, Accumulator features
- AC/DC converter power supply and 12V battery clips

Stockweigh RFID Recording Indicators



RFID and Data Recording Indicators

SW 2600EID

Robust, economical and user friendly. This entry level management indicator allows you to collect, store and download EID information on individual animals.

- 1.2" 6 digit lighted display
- Compatible with all major brands of EID readers
- Automatic recording of animal weight and EID tag
- Stores up to 1,525 records
- Information is stored in a CSV file for easy downloading
- StockWeigh Link—PC Software (provided) allows easy downloading from the indicator to your PC
- Wireless Blue Tooth™ technology
- Two DB9 serial ports for wand reader and computer interface
- AC/DC converter power cable and 12V battery clips



SW 4600EID

This advanced management indicator allows for both EID and VID input, with a customizable display offering easy data collection.

- Customizable multi-line display offers performance data during the weighing cycle
- Enter Visual ID, Premise ID, group/pen numbers, code fields, quick-data notes
- Average daily weight gain
- Automatic weight and EID tag recording
- 10,000 weigh record capacity
- Compatible with all major brands of EID wand readers
- Data export via industry standard CSV format
- StockWeigh Link—PC Software (provided) allows communication between the indicator and your PC
- Easy download of animal records from the indicator to your PC
- Easy uploading of quick data note fields to the indicator from your PC
- Two DB9 serial ports for wand readers and computer interface
- Wireless Blue Tooth™ technology
- AC/DC converter power cable and 12V battery clips



Stockweigh Load Cells

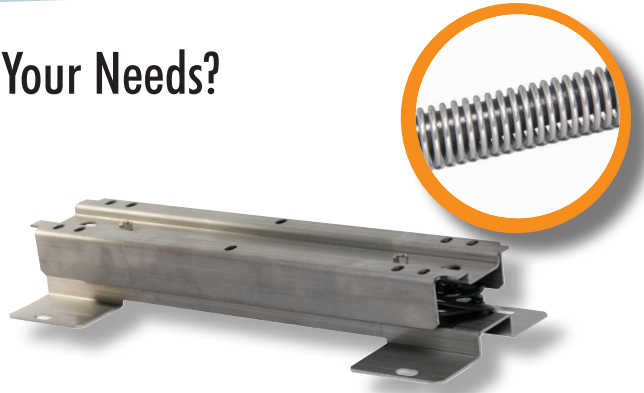
Which DIGI-STAR® Load Cell Design Meets Your Needs?

WRANGLER

3,300 lb capacity

Economical and portable alleyway scale system. Perfect for small producers, FFA Chapters and 4-H Clubs, and when production requires multiple weighing locations.

LENGTHS: 16" • 24" • 33-1/2"
GROSS CAPACITY: 1,650 lb/weigh beam
Two load cells per system
Cable Length: 15'
Features stainless steel cable guard
Mate with Digi-Star's Aluminum Deck
ACCURACY: ± 1% and ± 1 display count



CHUTEMASTER™ 6600

6,600 lb capacity

Designed for small producers with light duty manual chutes.

LENGTHS: 33-1/2" • 44"
GROSS CAPACITY: 3,300 lb/weigh beam
Two load cells per system
Cable Length: 15'
Features stainless steel cable guard
ACCURACY: ± 1% and ± 1 display count



CHUTEMASTER™ HD 7000

Rugged, manual squeeze chute scale. Universal mounting.

LENGTHS: 34" and 39"
GROSS CAPACITY: 3,500 lb/weigh beam
Two load cells per system
Cable Length: 15'
Stainless steel cable guard protection
ACCURACY: ± 1% and ± 1 display count



CHUTEMASTER™ 10,000/14,000

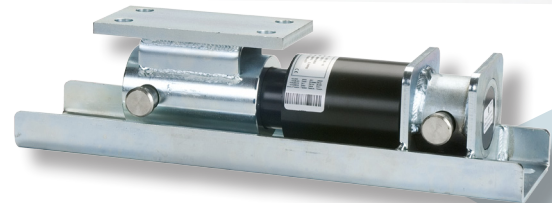
10,000 lb capacity
Use with high-use manual chutes and hydraulics.

14,000 lb capacity
Ideal for heavy hydraulic chutes, feedlot applications, and group scales

10,000 lb. features (4) 1.5 db
Load Cells and Mounts

14,000 lb.
Features (4) 1.875 db
Load Cells and Mounts.

Cable Length: 15'
Stainless steel cable guard
with or without junction box
ACCURACY: ± 1% and ± 1 display count



Digi-Star★



Providing Measuring Solutions To Optimize Agricultural Performance

INTRODUCING... 7,000 lb. Heavy Duty Weigh Beam

Heavy Duty Weigh Beams for Squeeze Chutes

- Easy to mount — no leveler adjustment necessary
- Accurate on mild slopes
- Stainless steel cable guard resists cable injury
- Serviceable in field
- 7,000 lbs. capacity (pair)
- 34" and 39" lengths



Digi-Star Stockweigh Accessories

Animal Friendly Aluminum Deck

Perfect for FFA Chapters and 4-H Clubs
Offers portability and mobility between multiple weighing locations
24.5" W x 6.12" H x 90.0" L
Requires two 24" Wrangler 3,300 lb load cells
3,300 lb capacity



Junior Aluminum Deck

Perfect for hogs, sheep or other small animals
28.5" W X 4" H X 54" L
700 lb capacity



EID Wand Readers

Digi-Star SW Indicators work with most brands of EID readers



Digi-Star 

W5527 Highway106
Fort Atkinson WI 53538 U.S.A.

TOLL FREE: (800) 225-7695
PHONE: (920) 563-1400
FAX: (920) 563-9721

EMAIL: sales@digi-star.com
WEBSITE: www.digi-star.com