



Cab Control Operators Manual



Cab Control 2400



Cab Control 3400



Cab Control 3600



Ft. Atkinson, Wisconsin USA



Panningen, The Netherlands

www.digi-star.com

Table Of Contents

BEFORE CHARGING BATTERY OR WELDING	3
OPERATION	4
TURN ON INDICATOR	4
COMMUNICATE WITH DIFFERENT TRUCK	4
SETTING UP INDICATOR	5
SETTING UP THE CAB CONTROL	6
INSTALLATION	7
CAB CONTROL MOUNTING	7
CAB CONTROL CONNECTION	7
FCC NOTIFICATIONS	8

BEFORE CHARGING BATTERY OR WELDING

Important Precaution

Disconnect all indicator leads before charging battery or welding. Damage may occur to indicator.

Note: All illustrations are the EZ3600 Cab Control. Keys used in this document are in same general location on all models.



If power supply low, *RECHARGE BATTERY – TURNING OFF* and *LO PWR* will display.


Note: If *LO BAT* displayed, indicator power (not Cab Control) is low.

See page 7 for installation instructions.

OPERATION

Turn on Cab Control



1. Press .



No signal received, Cab Control display flashes *NO DATA* and scale number (Example *SCL 1*).


Signal received, display matches scale indicator and indicator is controlled by Cab Control.

Note: For scale indicator operation refer to its manual.

Communicate With Different Truck



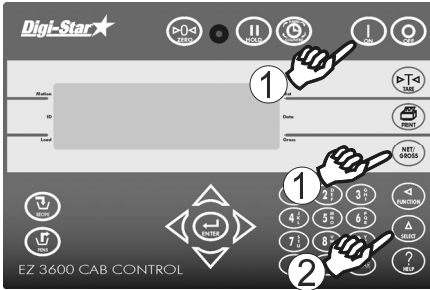
1. Pressing  once checks which scale indicator is communicating.

2. Repeatedly press  until desired indicator number is displayed.

Note: If scale number is not displayed, see setting up Cab Control page 6.

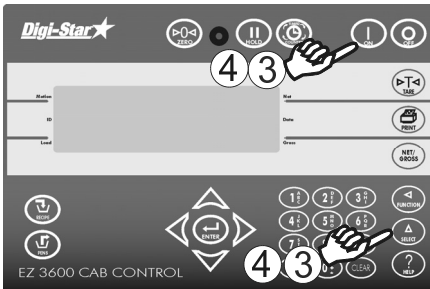
SETTING UP SCALE INDICATOR

EZ scale indicator has internal radio installed that is assigned a scale number. Two indicators cannot operate using the same scale number.

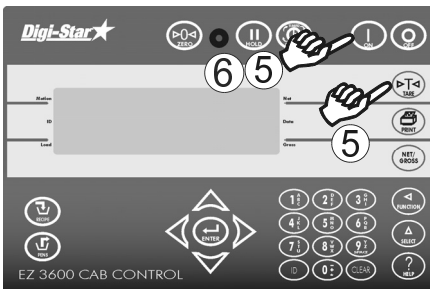


To set proper radio operation:

1. Press and hold **NET/GROSS** then press **ON** holding both for 3 seconds.
2. Press **SELECT** advances to Menu 2.

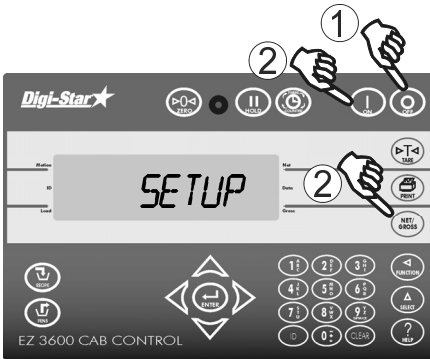


3. Press **ON** advances to *REMOTE*. Press **SELECT** sets to on.
4. Press **ON** saves setting and advance to *SCL NO*. Press **SELECT** sets desired scale number.



5. Press and hold **TARE** and press **ON** to return to scale operation.
 6. Press **ON**.
- Note:** For best performance with six or less indicators, use numbers 1-6.

SETTING UP THE CAB CONTROL



1. Press **OFF**.
2. Press and hold **NET/GROSS** then press **ON** holding both for 10 seconds.
3. *SETUP* and *BZZZER* will show on display followed by current setting.



4. Press **SELECT** toggles buzzer on/off then press **ON** to advance to *AUTOFF*.
5. Press **SELECT** set to off, 15, 30 or 60 seconds. Press **ON**.
6. Press **SELECT** to enable or disable each of twelve available scales. Press **ON**.
7. After last scale set press **ON** to exit.

INSTALLATION

Cab Control Mounting

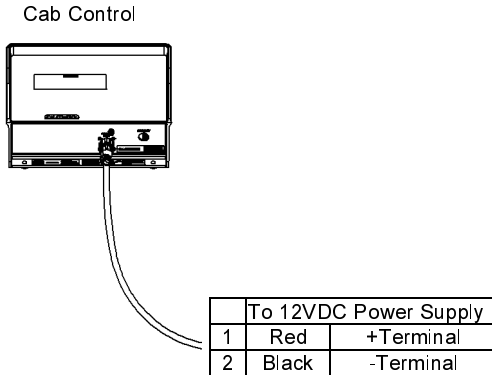
The Cab Control communicates with a scale indicator using an internal radio. For best results, place both indicator and Cab Control in locations not surrounded by metal. Glass does not block radio signals.

NOTE: The Cab Control usually works fine if the scale indicator is mounted inside the truck cab and the Cab Control is mounted inside the loader at dashboard level.

Cab Control Connection

Power obtained directly from 12 volt battery. Stationary applications use 120 VAC to 12VDC power cube that plugs into wall outlet.

Connect red wire from power cable to + terminal of 12 volt battery and black wire to ground.



Cab Control Connection Diagram

FCC NOTIFICATIONS

FCCID: OUR-24XTREAM

FCC ID: OUR9XSTREAM

This device complies with part 15 of the FCC rules. Operation is subject to the following conditions:

1. this device may not cause harmful interference
2. this device must not accept any interference received, including interference that may cause undesirable operation.

To comply with FCC regulations, this device may be used only with approved antennas. Contact Digi-Star Customer Support for additional information.

This equipment has been tested and found to comply with the limits for a Class B digital device, pursuant to Part 15 of the FCC Rules. These limits are designed to provide reasonable protection against harmful interference in a residential installation. This equipment generates, uses and can radiate radio frequency energy and, if not installed and used in accordance with the instructions, may cause harmful interference to radio communications. However, there is no guarantee that interference will not occur in a particular installation. If this equipment does cause harmful interference to radio or television reception, which can be determined by turning the equipment off and on, the user is encouraged to try to correct the interference by one or more of the following measures:

- Re-orient or relocate the receiving antenna.
- Increase the separation between the equipment and receiver.
- Connect the equipment into an outlet on a circuit different from that to which the receiver is connected.
- Consult the dealer or an experienced radio/TV technician for help.

⚠ Caution - This equipment is approved only for mobile and base transmitting devices, separation distances of (i) 20 centimeters or more for antennas with gains 6 dbi or (ii) 2 meters or more for antennas with gains = or > 6 dbi should be maintained between the antenna of this device and nearby persons during operation. To ensure compliance, operation at distances closer than this is not recommended.

IMPORTANT: The 9XStream (900 MHz) and 24XStream (2.4 GHz) Modules have been certified by the FCC for use with other products without any further certification (as per FCC section 2.1091). Changes or modifications not expressly approved by MaxStream could void the user's authority to operate the equipment.