



DataLink  
Installation Manual



Ft. Atkinson, Wisconsin USA



Panningen, the Netherlands

[www.digi-star.com](http://www.digi-star.com)



# TABLE OF CONTENTS

TECHNICAL SPECIFICATIONS:.....	1
INTRODUCTION: .....	2
BASE RADIO:.....	3
Minimal height of base radio:.....	3
Radio interference:.....	3
Range/distance: .....	4
Connection cable: .....	4
Base radio connections:.....	5
High gain antenna:.....	5
SETUP TMR TRACKER SOFTWARE: .....	6
Setup communication with base radio: .....	6
Com port setup:.....	7
TECHNICAL SUPPORT : .....	7
Helpdesk:.....	7

## APPENDIX A1: EC DECLARATION OF CONFORMITY

---

All rights reserved. Reproduction of any part of this manual in any form whatsoever without Digi-Star's express written permission is forbidden. The contents of this manual are subject to change without notice. All efforts have been made to assure the accuracy of the contents of this manual. However, should any errors be detected, Digi-Star would greatly appreciate being informed of them. The above notwithstanding, Digi-Star can assume no responsibility for any errors in this manual or their consequence.

## TECHNICAL SPECIFICATIONS:

**SIZE**

10.25" long x 8.0" high x 4" wide  
(240mm x 160mm x 92mm)

**WEIGHT**

1.2 Kg

**CONNECTOR**

AMP plastic weather resistant circular  
Connector. Gold contacts.

**POWER SUPPLY**

12 VDC- adapter

**RADIO SYSTEM**

2,4GHz

**COMMUNICATION**

Standard RS232  
High gain RS422

**RANGE**

Standard antenna up to 300 meter  
High gain antenna up to 1500 meter

**CONNECTION CABLE****(Between computer and transmitter)**

Standard 45 meter  
Customized longer cable available (ask your dealer)

## INTRODUCTION:

With the DataLink system you can communicate wireless between the Digi-Star TMR Tracker software and the EZ3600 weighing unit on the feed mixer. With DataLink you have a fully automated wireless transfer of feeding data from and to the EZ3600 weighing unit. DataLink uses a 2,4GHz wireless communication system for a reliable and fast data transfer.

TMR Tracker continuously searches for completed feeding data on the EZ3600 weighing unit. Once found the data will automatically be read in by the TMR Tracker software. The EZ3600 has an internal memory that will hold the data in the event when there is no connection. As soon as the connection is reestablished the completed feeding data will automatically transfer to the TMR Tracker software.

New or edited feedings can be send manually or automatically using the “Auto send” schedule.

**BASE RADIO:**

The DataLink base radio needs to be mounted as high as possible in order to get the greatest range. Also make sure that there are no obstructions like metal structures, buildings, trees or other obstruction in the path between base radio and feed mixer. Obstruction like this can cause interference which can significantly reduce the range.

Install the base radio using the included hardware as shown in figure 1 and 2. On the side of a building or high on a pole. The higher you install the base radio the better the range. When mounting to the side of a building make sure you turn the ram mount as far away from the building as possible. The best possible location for the base radio is critical for creating the best range possible.

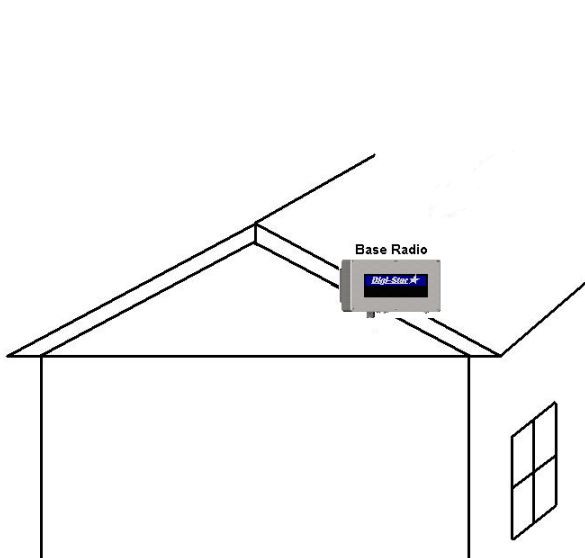


Fig. 1 (to the side of a building)



Fig. 2 (on a pole)

**Minimal height of base radio:**

Install the base radio minimal on a height as mentioned below.

Range	Minimal height
300 m Standard antenna	5 m +
1000 -1500 m High gain antenna	7.5 m +

**Radio interference:**

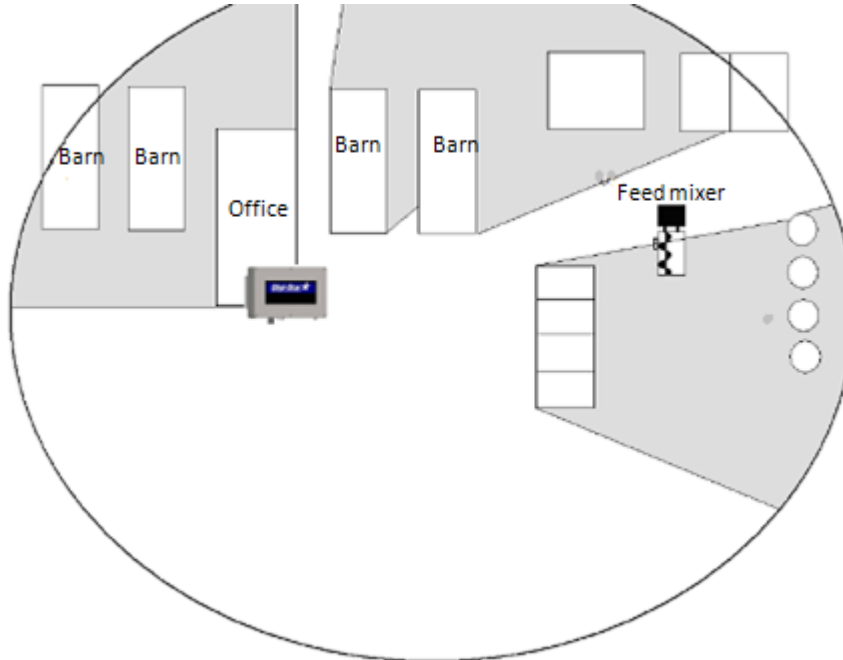
There are many types of wireless networks or WIFI that can interfere with the DataLink system. If you are dealing with this type of interference select a different scale number (see page 7).

**Note:** Make sure the scale number (SCL NO) in the indicator matches with the scale number in the TMR Tracker software.

### Range/distance:

Fig. 3 shows how buildings and other obstructions can reduce the range. In the grey area there will be reduced range. By installing the base radio as high as possible the range can be improved.

Fig. 3



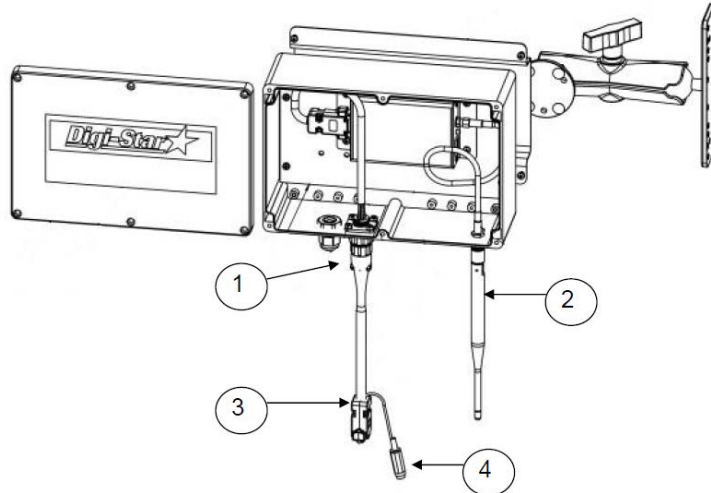
### Connection cable:

The cable from the base radio to the computer has a standard length of 45 m (RS-232). A longer cable can be delivered on request. Please contact your Digi-Star dealer for this.

Base radio connections:

- Connect the base radio according to the instructions below (Fig. 4) .

Fig. 4



1. Connect the 8 pin AMP connector to the base radio.
2. Connect the antenna to the antenna connection on the base radio.
3. Connect the DB9 (9 pin connector) to the I/O port of your computer or with the included USB/serial converter to the USB port\*\*.

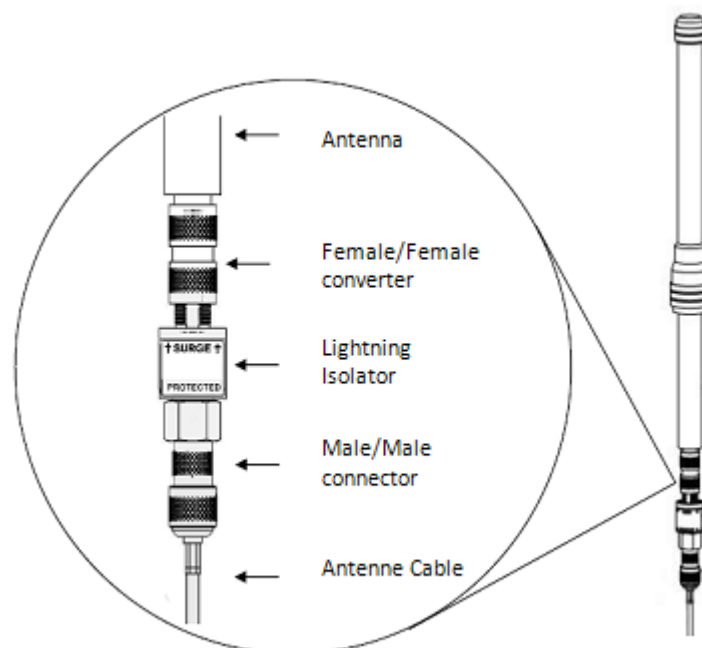
**\*\*First install the driver software before you plug in the USB/serial converter. You can find the driver software on the TMR Tracker CD.**

4. Connect the 12Vdc adapter to the power connection

High gain antenna:

Make sure that when you are using a high gain antenna the lightning isolator is installed correctly. Fig. 5.

Fig. 5



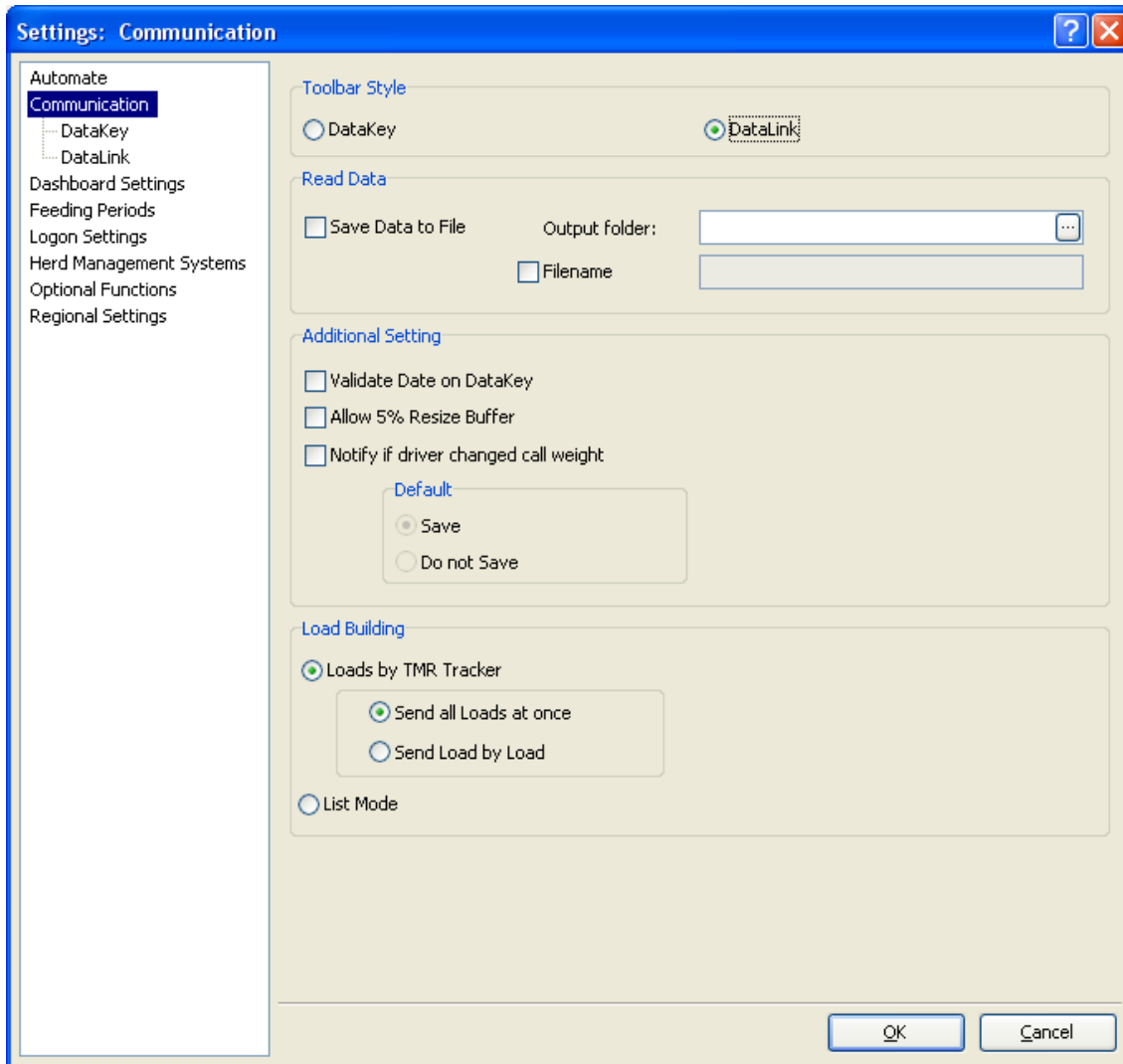


## SETUP TMR TRACKER SOFTWARE:

Setup communication with base radio:

- In TMR Tracker go to the main menu and select “Program settings/General settings”
- Select “Communication”
- Check the boxes as shown in fig. 6.

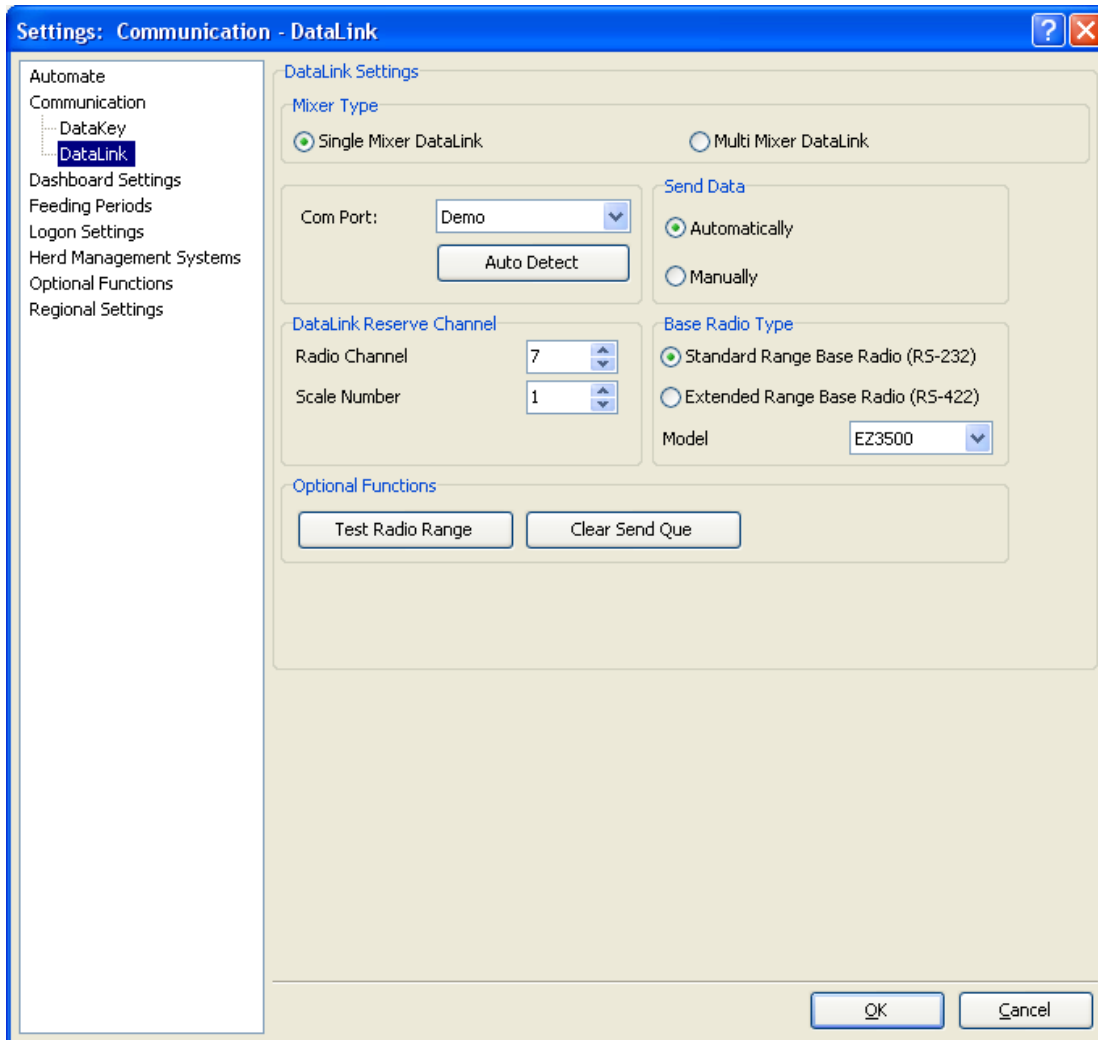
Fig. 6



Com port setup:

- Continue by selecting “DataLink” and check the boxes as shown in fig. 7.
- Click on “Auto Detect” and wait until the software has found the com port.
- Click “OK” to save the settings and close the window

Fig. 7



## TECHNICAL SUPPORT :

Helpdesk:

If you are having problems during the installation and setup please contact our help desk. Check [www.digi-star.com](http://www.digi-star.com) or [www.tmrtracker.com](http://www.tmrtracker.com) for additional information.

## APPENDIX A1: EC DECLARATION OF CONFORMITY

Application of Council Directive(s)	2004/108/EEC
Manufacturer's Name	Digi-Star, LLC
Manufacturer's Address	W5527 Hwy. 106, Fort Atkinson, WI 53538
European Representative Name	Digi-Star Europe B.V.
European Representative Address	J.F. Kennedylaan 235, 5981 WX Panningen (NL)

---

Model name     Datalink Base Radio

Conformance to:

- EN 61326 - electrical equipment for measurement, control and laboratory use
- EN 55011 - for Class B ISM equipment for industrial, scientific, and medical equipment

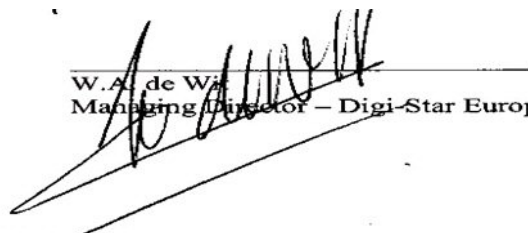
Beginning serial N°:         1001  
Year of Manufacture:         2004

We, the undersigned, hereby declare that the equipment specified above conforms to the above Directive(s).

Manufacturer



Legal representative in Europe



W. A. de Wit  
Managing Director – Digi-Star Europe, B.V.

**Signature**

Name:         Doug Evenson  
Position:     Director of Operations  
Place:         Fort Atkinson, WI U.S.A.  
Date :         25 March 2009

**Signature**

Name:         Wim de Wit  
Position:     Managing Director  
Place:         Panningen, the Netherlands  
Date:         25 March 2009